

Dental **PRODUCT
SHOPPER**

Future Proof Your Operatory

With a history steeped in innovation, reliability, and customer care, A-dec® has unveiled cutting-edge technology that makes it easy for dentists to optimize patient care, improve ergonomics, and grow the dental practice.



a dec®

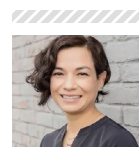
Improved Connectivity: A Better Patient Experience

The new A-dec Pro delivery system and its A-dec+ software open up new possibilities for practice growth, making it easy to update equipment as technology evolves, monitor multiple systems in one or more practices remotely, and ultimately create a better experience for your patients.

Dr. Angela Toy strives to make patients the highest priority at her practice in Newberg, OR. That means offering as many services as possible and creating an environment where patients feel comfortable. Her practice has a modern look and features advanced technologies, showing patients she cares about their experience and is willing to invest in tools and equipment that allow her to offer exceptional care.

Taking center stage in each operator, the delivery system plays an integral role in improving efficiency and ergonomics, while also keeping patients comfortable during their appointments. Durability and reliability are a must, but so is the ability to upgrade as technology evolves. That's exactly what Dr. Toy got when she invested in the A-dec 500 Pro delivery system with A-dec+ software.

"My first impression with A-dec equipment is that it's really well thought-out," Dr. Toy said. "The equipment is really durable and strong, and looks clean, modern, and sleek. It's really surprising how many times a patient has walked into our operatory and had that 'wow' response. And that 'wow' factor contributes to a patient's confidence in the practice."



"It's really surprising how many times a patient has walked into our operatory and had that 'wow' response."

—Angela Toy, DDS, FAGD

Why A-dec Pro Is Different

A-dec recently unveiled the first-ever digitally connected delivery systems, the A-dec 500 Pro and A-dec 300 Pro.

Thanks to A-dec+ software—which is built into the A-dec 500 Pro and available to the A-dec 300 Pro via the A-dec+ Gateway device—practices have a new level of connectivity and the freedom to add more services and features as technology advances.

The robust software is not only upgradeable, it makes it possible for clinicians to monitor equipment remotely. This allows for visibility into equipment performance and diagnostics, and is especially useful for practices with multiple locations. Using the A-dec+ app, clinicians and teams can simply log in to monitor and manage their equipment. The app provides access to new product features and the latest enhancements.

Clinicians can use the Dynamic Screen 7 (DS7) touchscreen to access

the diagnostic information they need as well as software updates. The 7" durable glass screen features an advanced responsive surface and a simplified interface.

A-dec+ can also be integrated into old, new, or future A-dec products via the A-dec+ Gateway.

The Possibilities Are Endless

New features will be added as technology advances, further improving connectivity and, most importantly to dentists like Dr. Toy, the patient experience.

"Patients will sit back in the chair and say, 'I really wish I could have one of these at home because it's really comfortable, or 'Wow, that piece of equipment looks so interesting. I've never seen anything like it,'" Dr. Toy said. "Those reactions are important aspects of the patient experience."

A-dec Pro grows with your practice, as the upgradeable software makes it future proof.

Reliable Equipment that Grows with Your Practice

The A-dec Pro delivery systems are not only sleek, ergonomic, and easy to use, the upgradeable A-dec+ software opens up opportunities, bringing a new level of connectivity and flexibility to practices.

As a company, A-dec is known for crafting high-quality equipment that stands the test of time. When dentists invest in an A-dec delivery system, they can be confident the equipment will be part of their practice for years to come. Now, with the A-dec Pro delivery system and A-dec+ software, dentists can easily upgrade these trusted systems with the latest technology and features, enhancing connectivity.

Here's a look at five key features that make this delivery system stand out:

1 Flexibility. The A-dec 500 Pro comes with A-dec+ software, which can also be integrated into old or new A-dec products or future products via the A-dec+ Gateway. This includes the compact, modular A-dec 300 products.

Through the upgradeable software, dentists can integrate new clinical capabilities into the existing platform as they're introduced. The equipment evolves with you, helping to keep your practice on the leading edge.

"The software's ability to provide features on a continuous spectrum is a really fantastic feature for dentists who may be a little cautious about investing in new technology," Dr. Toy said. "I've never worked with a product that has the capability to upgrade through the software, and I think it really speaks to the innovation and direction A-dec is going."

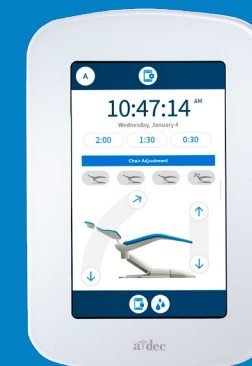
2 Improved ergonomics. Ergonomics is always top of mind for dentists, and is critical for career longevity. But finding equipment that fits that bill is not always easy. Patients, for example, might have physical limitations that make it difficult for dental professionals to practice from the ideal position, Dr. Toy said. Further, clinicians come in all shapes and sizes and practice in different ways, making it important to invest in equipment that's adaptable.

"There are some procedures I perform standing and others



2 KEY FEATURES OF THE A-DEC 500 PRO:

- **The A-dec+ upgradeable software platform.** The software is built in and can be used to make updates when needed and to monitor equipment and troubleshoot problems remotely.
- **7" glass touchscreen.** The Dynamic Screen 7 (DS7) touchscreen is easy to use and only displays the information you need.



where I'm sitting," Dr. Toy said. "What impressed me about the A-dec equipment is it allows me to practice both styles very easily. I don't have to make a big transition in repositioning myself. The equipment was very adaptable and felt really good to use."

3 Intuitive user interface. The way the features are organized on the A-dec Pro's touchscreen just make sense, and it's easy to read, Dr. Toy said.

"Most people are used to, whether it's on their phone or tablets, just swiping," she said. "They're used to seeing the buttons and interfaces digitally. So, from that aspect, it was very easy for me to learn how to use it. It was very intuitive. You see a symbol and you know what it means. I actually felt that I used the features more on that touchscreen than I did the traditional push buttons."

Dr. Toy likes that she can turn the water on and off quickly, or change the handpiece speed through the enhanced user interface. It's also easier to move between different programs, she said, giving her the confidence to use more of them than she did with her previous equipment.

"I use electric handpieces, typically ran at one speed and for one purpose," she said. "The way the interface is set up makes it very easy for me to change

THE A-DEC 500 PRO DELIVERY SYSTEM FEATURES:

- Software updates through the A-dec+ platform and app to ensure the equipment evolves with your practice
- The DS7 touchscreen, which displays diagnostic equipment alerts
- Remote equipment management through the A-dec+ app in one or multiple practices
- System analytics for more effective equipment use
- Six control head positions that can integrate various combinations
- Reciprocating endo that makes it easy to switch between general restorative and endo functions
- An LED coolant indicator that lights up when a handpiece is lifted for easy adjustment
- Easy positioning
- Includes chair-mounted (Continental and Traditional) and cabinet-mounted (rear) delivery system options



the speed so I can use the handpiece for different purposes. I find myself using the other equipment, like my handpiece, to their greatest potential because it's so easy for me to make the transition during a procedure."

4 Simplified equipment management. The A-dec+ software makes it easy for clinicians to monitor equipment from afar, whether at their main practice or other locations. They can get updates on equipment health and maintenance

THE A-DEC EDUCATION CENTER

Visit an A-dec Education Center in Newberg, OR, or Nashville, TN, to see what's possible in your practice. The centers feature dedicated learning facilities and showrooms with fully equipped treatment rooms, giving you the complete A-dec Educational Experience (AEE) before you make an investment in equipment. During your personalized visit, you'll have the opportunity to test out A-dec equipment and talk with a team member about design ideas that will transform your practice. You'll also have the chance to see the love and pride that goes into every piece of equipment the team creates.

If you can't book a trip away from the practice right now, you can take advantage of A-dec's virtual showroom. An A-dec expert will guide you via livestream, educating you about A-dec products and what makes the company different.

Whether in-person or virtual, you'll get to know the A-dec team and what goes into every piece of equipment they develop. Ask your dealer how to schedule a visit or click [here](#).

from the DS7 or the A-dec+ app.

The system also provides access to critical information on the spot. For example, in the past, if Dr. Toy wasn't sure if the water was on or off, she had to bend over to locate the switch on the rheostat to find out. Now, she can look at the user interface, and if she needs to turn it on or off, she just reaches over to do it. There's no need to reposition because everything she needs is right in front of her, and that also improves ergonomics.

5 It gives your practice a more modern look and feel. Investing in technology creates value for the patient, Dr. Toy said. They notice everything about your practice, especially the technologies you do or don't have. When they walk into an office and see an A-dec Pro unit, they're impressed. They can see they're in a

modern practice, and that the dentist is willing to invest in equipment that improves their experience.

Seeing technology in your office puts patients at ease, making them feel more comfortable going forward with treatment.

"Every patient will tell you they think going to the dentist is expensive," Dr. Toy said. "They expect the highest-quality care, whether that's the actual procedure you're doing or the environment they're in. They need to feel the equipment is safe, that it's going to work, and that it's new and clean. It helps make their experience better because they feel safe and confident that they're in the right place."

The Freedom to Evolve

In dentistry, technology is constantly advancing, making it critical to invest



in equipment that will grow with your practice, and not hold you back. The A-dec Pro delivery systems, featuring A-dec+ updateable software, give you the freedom and connectivity that your practice needs to evolve.

You can easily monitor equipment from one or more locations to make sure everything is running as it should and troubleshoot when it isn't, and receive updated features and capabilities as they become available.

"Dentists sometimes get so focused on what we're doing chairside that we don't always think about the subtle things patients are thinking about," Dr. Toy said. "So, it's that first impression of how clean a space looks or how modern and new the technology is. A lot of dentists really miss out on that because we're so focused on providing the clinical aspects that we're not really looking at the products."

Equipment like the A-dec Pro platform impresses patients while opening up new opportunities for growth.

"The new system," Dr. Toy stressed, "has been nothing but fantastic."

THE A-DEC 300 PRO DELIVERY SYSTEM FEATURES:

- Software updates through the A-dec+ platform and app when upgraded through the A-dec+ Gateway
- Open platform design allows clinicians to add new tools and capabilities
- Intuitive user interface that makes it easy to control the equipment and integrated devices
- 3 or 4 position control block design made with corrosion resistant materials and a water flow system that prevents stagnation
- Centrally mounted control head that pivots to reduce strain and fatigue
- Self-contained waterline maintenance system
- Easy positioning via a balanced flexarm with airbrake or manual height adjustment
- Modular, compact and customizable design
- Control Pad 5 (CP5) and Control Pad 5i (CP5i), which display the information you need, with visual cues, audible tones, and clear text confirming your commands



Additional Resources

CONNECT WITH
a dec[®]