

A-DEC

Finding a Place for Every Instrument, Tool, & Material

The A-dec Inspire treatment console is a customizable, convenient, and ergonomic modular unit that will quickly become the "control center" of any operatory

When Benjamin Franklin said, "A place for everything and everything in its place," he couldn't know that he was describing the A-dec Inspire treatment console, A-dec's signature dental cabinet. Fast forward 250 years and this customizable and convenient dental cabinet has quickly become an operatory staple. Today, many dentists refer to the A-dec Inspire treatment console as the "control center" of the dental operatory, including Meredith Gantos, DDS, who owns Gantos Dental Group in Naperville, IL.

"I've had this cabinet for over 3 years and it is definitely the control center of my operatory—it's the hub where everything is organized, stored, and easily accessible," Dr. Gantos said.

One-Stop Treatment Console

A-dec's Inspire dental cabinets increase workflow efficiency by offering busy operatories a one-stop treatment console that keeps supplies and equipment organized and within easy reach. Pass-through upper storage allows assistants to restock instruments and supplies without interrupting procedures and single- or dual-floating shelves offer ergonomic positioning for procedural tubs and ancillary devices.

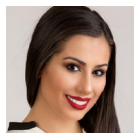
The cabinet's swivel shelves on the assistants' side enable assistants to remain seated for the entire patient visit, yet have access to any unexpected tools or materials dentists may suddenly require during treatments. This unique design of the A-dec Inspire treatment console, including easy-to-reach storage for cassettes or tubs, allows assistants to stay in the same position throughout procedures, thereby minimizing frequent movements that can be a drain on workflow efficiency as well as a physical strain for clinicians. Additionally, the appearance of clinicians moving around during procedures can be unsettling for patients.

"It's important that the appointment flow is seamless. Movements, such as stopping treatment to get up and find an instrument, creates an impression of being unprofessional and unprepared," Dr. Gantos said. "A high-end experience for patients starts with setting the right environment and you want cabinetry that is inviting and beautiful, yet also conveys a clean, decluttered esthetic."

Organization = Calmness

While the simplified design and uncluttered appearance promotes organization and workflow efficiency, it also provides a calm presence for patients, some of whom are anxious when first arriving in the dental chair.

"Patients already come fearful to the dental office and the more we can streamline our workflows to move quickly but thoughtfully through their visits and create a comfortable environment, the better," said Dr. Gantos. "With this cabinet, everything is out of the patient's sight—the patient never has to see any of it! They are able to relax and look at peaceful imagery and not at dental instruments or tools. You want a clean and unthreatening esthetic but yet everything at your fingertips so you are prepared for wherever the treatment takes you. This A-dec Inspire treatment console with a 12 o'clock delivery also allows me to work with both right- and left-handed providers, which is a huge plus."



Meredith Gantos, DDS

"The quality you find with A-dec is unmatched—3 years later, our cabinets look as if they could have been installed yesterday!"

Addresses Unique Dental Needs

Not all cabinets are the same, and while non-dental cabinet makers abound, the A-dec line of dental furniture is specifically designed for dental operatories. Counters can support the heavy weight and constant movement of dental equipment, such as lights, monitors, and x-ray equipment. Additionally, the A-dec Inspire treatment console is modular and customiz-

able, with drawer organizers that can be altered to suit each operatory and a modular grid system that allows reconfiguration from drawers to cabinets as practice needs change.

"The ability to customize the drawers with organizers is one of the most exciting aspects of this cabinet," Dr. Gantos shared. "I love how organized we can make it! The small containers that fit together to customize the cabinet are exceptional! Every operatory in our office is organized the same which maximizes our efficiency and workflow—every carpule of anesthetic and every composite syringe has a particular spot. This facilitates stocking, purchasing, and greater ease during appointments and also allows for more same-day treatment because each room is equipped to tackle any dental need the patient may have."

Worry-Free Reliability

In addition to dozens of specialized compartments, A-dec Inspire dental cabinets include a host of integrated features such as electrical outlets, cord drops, floating shelves, sinks, and accommodations for common dental necessities, such as vacuum line cleaners. Tested for worry-free reliability and protected by a 5-year warranty, the A-dec Inspire treatment console is serialized, which means it's not built in or attached to the building, a feature that allows for practices to take the furniture with them if they change locations or remodel their office.

"The A-dec Inspire treatment console with a 12 o'clock delivery is designed with dentists in mind and created to facilitate 4-handed dentistry," Dr. Gantos explained. "There are so many fine details and features for both the doctor and the assistant to ensure the most harmonious workflow together. The quality you find with A-dec is unmatched—3 years later, our cabinets look as if they could have been installed yesterday!"

